



AL300ULXB UL Recognized Power Supply/Charger

Rev. 010401

Overview:

The AL300ULXB is a power supply/charger that converts a 115VAC 50/60Hz input, into a Class 2 Rated power limited 12VDC or 24VDC output (see specifications).

Specifications:

Agency Listings:

- UL Recognized component for: Access Control System Units (UL 294), Power Supplies for use with Burglar-Alarm Systems (UL 603), Hospital Signaling and Nurse Call Equipment (UL 1069), Power Supplies for Fire Protective Signaling Systems (UL 1481).



Input Rating:

- Input 115VAC 50/60Hz, 1.45 amp.

Output Rating:

- Class 2 Rated power limited output.
- 12VDC or 24VDC selectable output.
- 2.5 amp continuous supply current.
- Filtered and electronically regulated output.

Battery Backup:

- Built-in charger for sealed lead acid or gel type batteries.

Battery Backup (continued):

- Maximum charge current .7 amp.
- Automatic switch over to stand-by battery when AC fails.
- Zero voltage drop when switched over to battery backup.

Visual Indicators:

- AC input and DC output LED indicators.

Supervision:

- AC fail supervision (form "C" contacts).
- Low battery and battery presence supervision (form "C" contacts).

Additional Features:

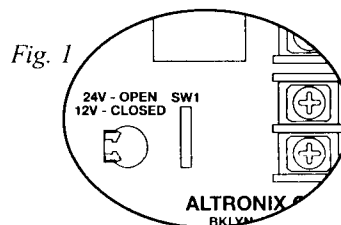
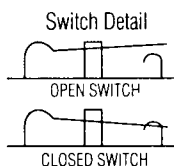
- Short circuit and thermal overload protection.

Board Dimensions (approximate):

4.6"W x 7.5"L x 2.7"H

Power Supply Voltage Output Selections:

Output	Switch Position
12VDC	SW1 - CLOSED (Fig. 1, on right)
24VDC	SW1 - OPEN (Fig. 1, on right)



Stand-by Specifications:

Output	4 hr. of Stand-by & 5 Minutes of Alarm	24 hr. of Stand-by & 5 Minutes of Alarm	60 hr. of Stand-by & 5 Minutes of Alarm
12VDC / 40AH Battery	Stand-by = 2.5 amp Alarm = 2.5 amp	Stand-by = 1.0 amp Alarm = 2.5 amp	Stand-by = 300mA Alarm = 2.5 amp
24VDC / 12AH Battery	—	Stand-by = 200mA Alarm = 2.5 amp	—
24VDC / 40AH Battery	Stand-by = 2.5 amp Alarm = 2.5 amp	Stand-by = 1.0 amp Alarm = 2.5 amp	Stand-by = 300mA Alarm = 2.5 amp

LED Diagnostics:

Red (DC)	Green (AC)	Power Supply Status
ON	ON	Normal operating condition.
ON	OFF	Loss of AC, Stand-by battery supplying power.
OFF	ON	No DC output.
OFF	OFF	Loss of AC. Discharged or no stand-by battery. No Dc output.

Terminal Identification:

Terminal Legend	Function/Description
L, G, N	Connect 115VAC 60Hz to these terminals: L to hot, N to neutral, G to ground.
- DC +	12VDC / 24VDC @ 2.5 amp continuous non-power limited output.
AC Fail NC, C, NO	Indicates loss of AC power, e.g. connect to audible device or alarm panel. Relay normally energized when AC power is present. Contact rating 1 amp @ 28VDC. AC or brownout fail is reported within 1 minute of event. To delay reporting of up to 6 hrs., cut "AC delay" jumper and reset power to unit.
Bat Fail NC, C, NO	Indicates low battery condition, e.g. connect to alarm panel. Relay normally energized when DC power is present. Contact rating 1 amp @ 28VDC. A removed battery is reported within 5 minutes. Battery reconnection is reported within 1 minute. Low battery threshold: 12VDC output threshold set @ approximately 10.5VDC, 24VDC output threshold set @ approximately 21VDC.
+ BAT -	Stand-by battery connections. Maximum charge current .7 amp.

Fig. 2

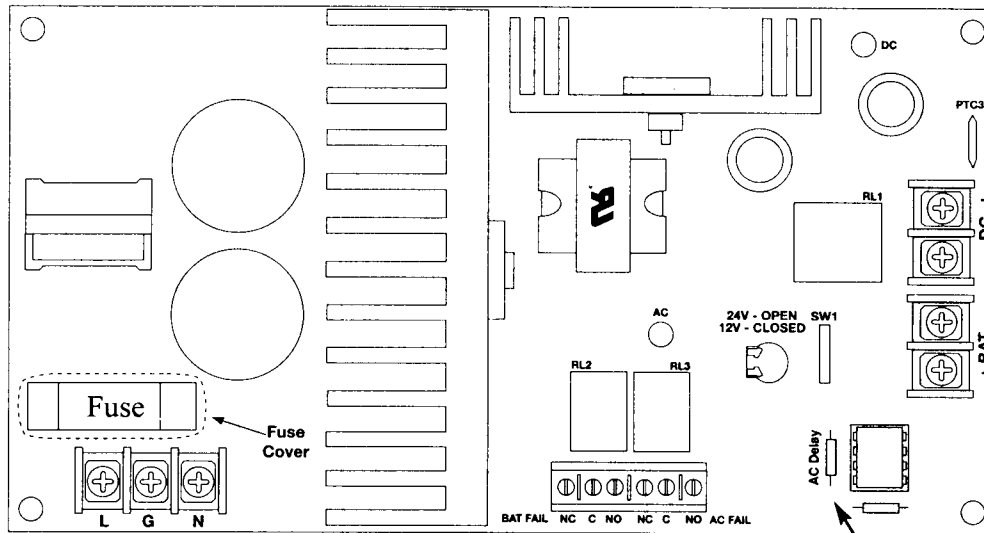
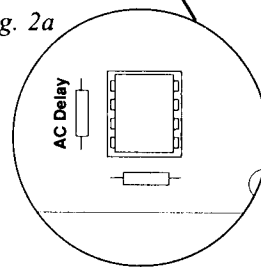


Fig. 2a



Altronix is not responsible for any typographical errors.

Altronix Corp.
140 58th Street, Brooklyn, New York 11220 USA, 718-567-8181, fax: 718-567-9056
website: www.altronix.com, e-mail: info@altronix.com, Lifetime Warranty, Made in U.S.A.
IIAL300ULXB - Rev. 010401 E291

